



Light Efficiency:



Light Quality:



Color Temperature:



Output: 383 lm

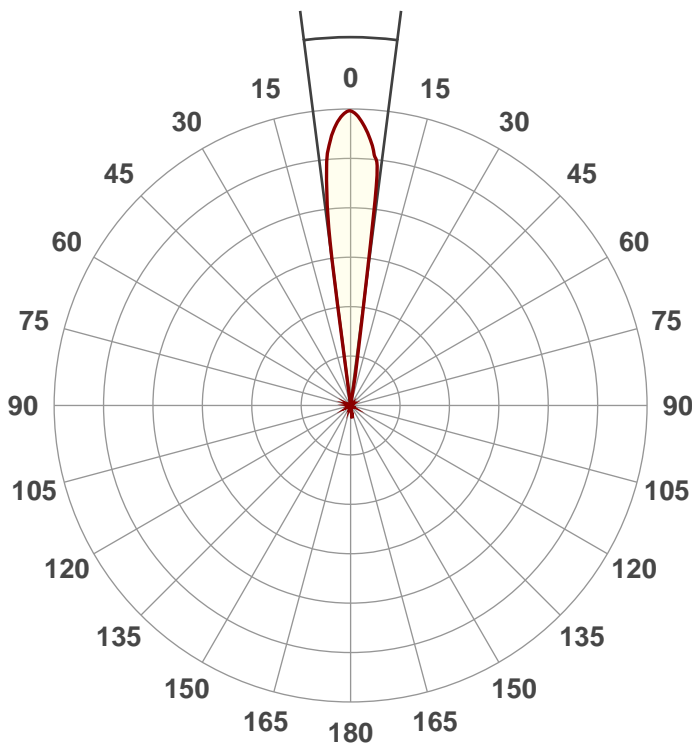
Peak: 8046 cd

Power: 44.6 W

PF: 0.99

Beam Angle

14.6°



Product Name:

Pocket Pro

Test:

Date:

4/11/2018

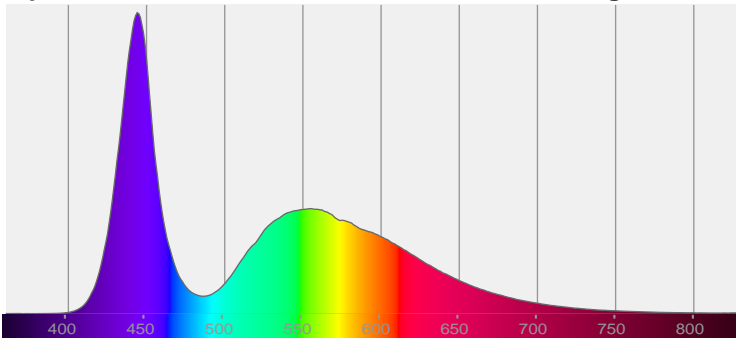
Note:



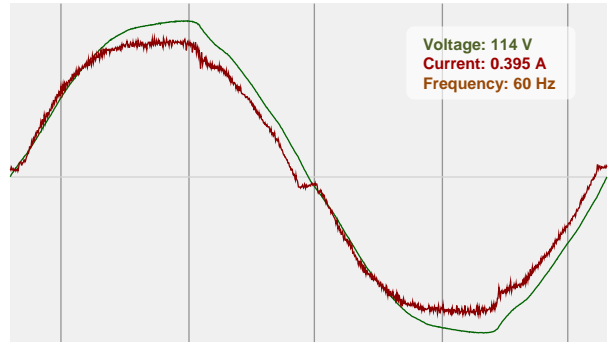
CIE 1931
x: 0.289
y: 0.270

Spectra

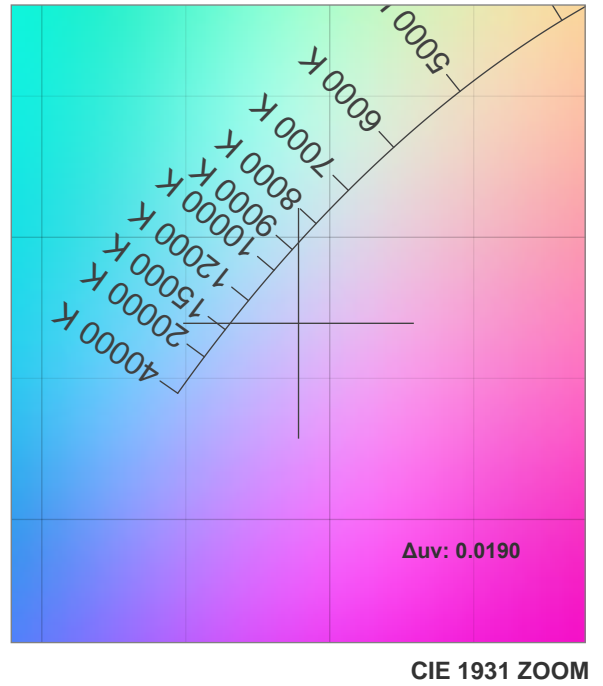
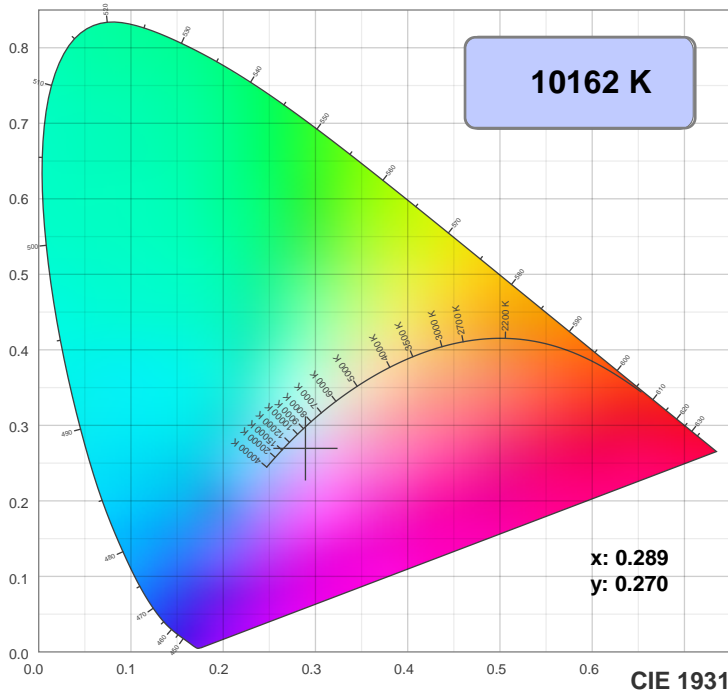
Dominant Wavelength: 360nm



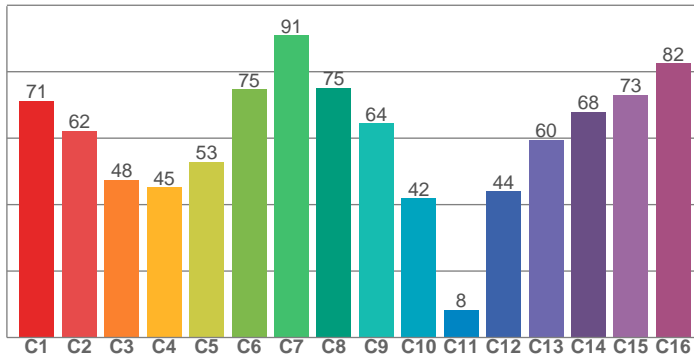
Power



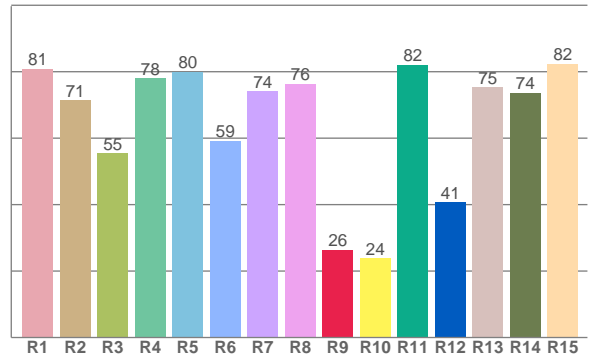
Color Details



TM30: 59.1



CRI: 71.9 (R1-R8)



CRI R values, only R1-R8 are used to calculate final CRI value

R1	R2	R3	R4	R5	R6	R7	R8	R9	R10	R11	R12	R13	R14	R15
80.9	71.3	55.4	78.0	79.9	59.2	74.2	76.4	26.5	24.0	82.1	40.7	75.3	73.7	82.4

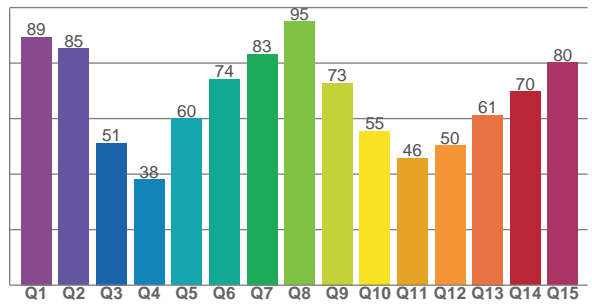
TM30 C values, 16 binned values out of total of 99 C values

C1	C2	C3	C4	C5	C6	C7	C8	C9	C10	C11	C12	C13	C14	C15	C16
71.3	62.2	47.5	45.2	52.9	74.7	91.0	75.1	64.5	41.9	8.3	44.0	59.6	68.0	73.0	82.5

CQS Q values

Q1	Q2	Q3	Q4	Q5	Q6	Q7	Q8	Q9	Q10	Q11	Q12	Q13	Q14	Q15
89.4	85.2	51.2	38.1	59.9	74.2	83.3	94.9	72.8	55.5	45.7	50.3	61.2	69.7	80.2

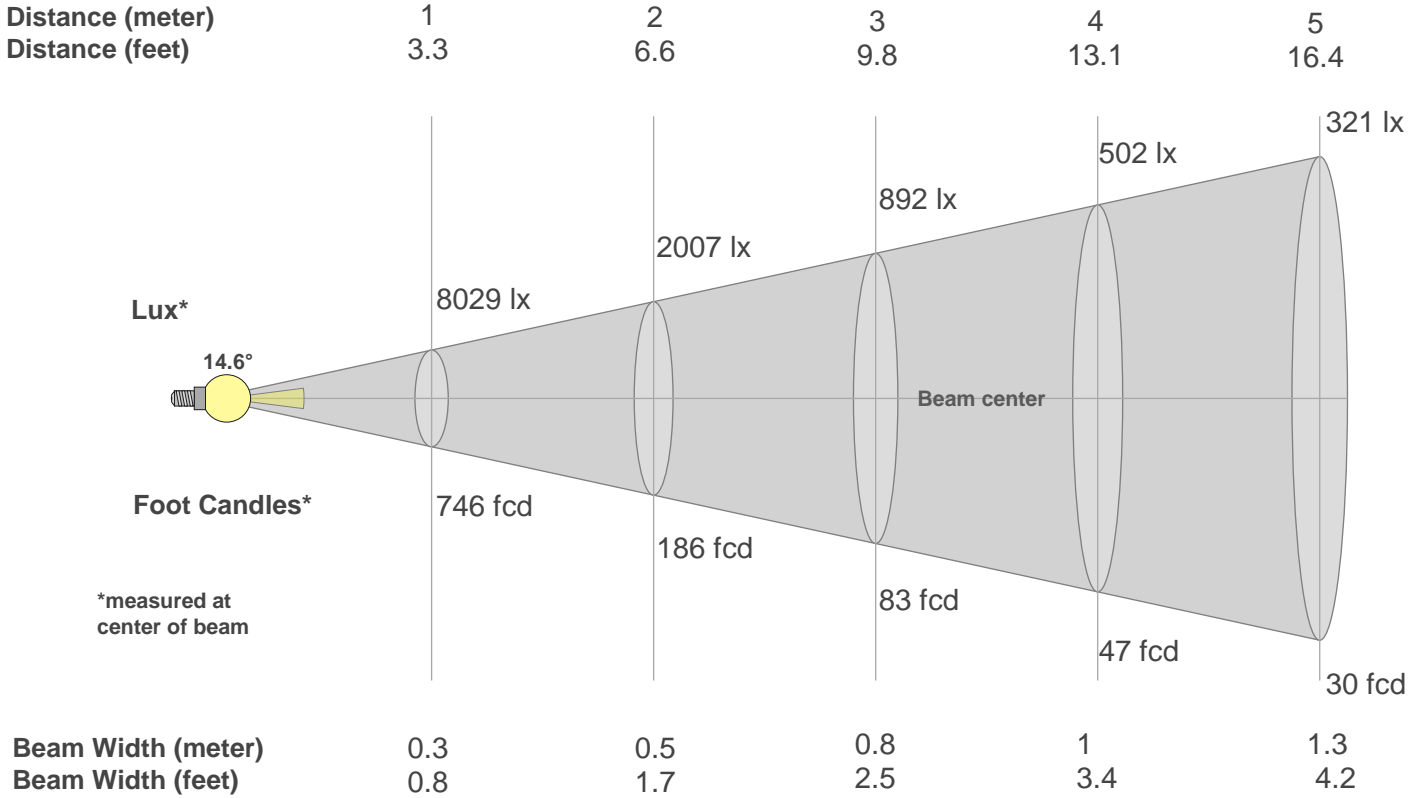
CQS: 63.4



Color Parameters

Color Temperature	Color Rendering Index	Red Component	Color Fidelity	Color Gamut	Color Quality Scale	Color Coordinate CIE 1931	Color Coordinate CIE 1931	Color Coordinate	Color Coordinate	Color Deviation from Black Body
CCT	CRI	CRI R9	TM30 Rf	TM30 Rg	CQS	x	y	u	v	Δuv
10162 K	71.9	26.5	59.1	99.2	63.4	0.289	0.270	0.205	0.286	0.0190

Beam Details



Beam Intensities from 1-20m

m	1	2	3	4	5	6	7	8	9	10	11	12	13	14	15	16	17	18	19	20
ft	3.3	6.6	9.8	13.1	16.4	19.7	23	26.2	29.5	32.8	36.1	39.4	42.7	45.9	49.2	52.5	55.8	59.1	62.3	65.6
lx	8029	2007	892	502	321	223	164	125	99	80	66	56	48	41	36	31	28	25	22	20
fcd	745.9	186.5	82.9	46.6	29.8	20.7	15.2	11.7	9.2	7.5	6.2	5.2	4.4	3.8	3.3	2.9	2.6	2.3	2.1	1.9

Intensities in 0° C-plane

0°	1°	2°	3°	4°	5°	6°	7°	8°	9°	10°	11°	12°	13°	14°	15°	16°	17°	18°	19°
8029	7981	7857	7670	7370	6930	6177	4708	1717	19	15	12	10	7	6	5	4	3	2	1
100%	99%	98%	96%	92%	86%	77%	59%	21%	0%	0%	0%	0%	0%	0%	0%	0%	0%	0%	0%

Intensities in 90° C-plane

0°	1°	2°	3°	4°	5°	6°	7°	8°	9°	10°	11°	12°	13°	14°	15°	16°	17°	18°	19°
8029	7981	7857	7670	7370	6930	6177	4708	1717	19	15	12	10	7	6	5	4	3	2	1
100%	99%	98%	96%	92%	86%	77%	59%	21%	0%	0%	0%	0%	0%	0%	0%	0%	0%	0%	0%

Intensities in 180° C-plane

0°	1°	2°	3°	4°	5°	6°	7°	8°	9°	10°	11°	12°	13°	14°	15°	16°	17°	18°	19°
8029	7953	7790	7584	7339	7009	6460	4971	1682	485	15	10	6	5	4	3	3	2	2	1
100%	99%	97%	94%	91%	87%	80%	62%	21%	6%	0%	0%	0%	0%	0%	0%	0%	0%	0%	0%

Intensities in 270° C-plane

0°	1°	2°	3°	4°	5°	6°	7°	8°	9°	10°	11°	12°	13°	14°	15°	16°	17°	18°	19°
8029	7953	7790	7584	7339	7009	6460	4971	1682	485	15	10	6	5	4	3	3	2	2	1
100%	99%	97%	94%	91%	87%	80%	62%	21%	6%	0%	0%	0%	0%	0%	0%	0%	0%	0%	0%

Beam Angle 50%	Field Angle 10%	Cutoff Angle 2,5%	Intensity Ratio in 120° Cone	Intensity Ratio in 90° Cone
14.6°	17°	17.7°	99.4%	99.3%