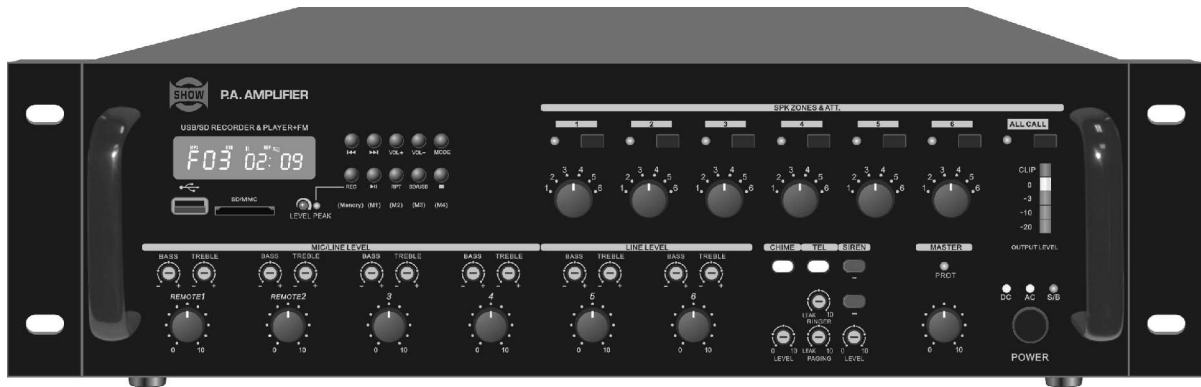




THE UNIVERSE OF INSTALLATION

PUBLIC ADDRESS AMPLIFIER

User's Manual



PS-Series



TABLE OF CONTENTS

01 INTRODUCTION.....	1-2
02 PS-2406/4806 FUNCTION DESCRIPTION.....	3-6
03 CHIME CHANGING.....	6-7
04 MSG CHANGING.....	7-8
05 ZONE INDICATOR STATUS OF THE HOST FRONT PANEL.....	8-8
06 MP3 PLAYING MODE OPERATION.....	9-9
07 FUNCTION OF FM MODE.....	10-10
08 THE FUNCTION OF PRIORITY SETTING MODE.....	10-11
09 FUNCTION OF RECORDING MODE.....	11-11
10 SPECIFICATIONS.....	12-12
11 PM-01 FUNCTION DESCRIPTION.....	13-14
12 PM-06 FUNCTION DESCRIPTION.....	15-16
13 CHIME CHANGING.....	17-18
14 CONFIGURATION EXAMPLE.....	19-19
15 PS-2406/4806 BLOCK DIAGRAM.....	20-20

IMPORTANT!

Please read this manual carefully before operating this unit for the first time.

All rights reserved to SEIKAKU. All features and content might be changed without prior notice. Any photocopy, translation, or reproduction of part of this catalogue without written permission is forbidden. Copyright © 2009 SEIKAKU GROUP

SAFETY RELATED SYMBOLS



The symbol is used to indicate that some hazardous live terminals are involved within this apparatus, even under the normal operating conditions.



The symbol is used in the service documentation to indicate that specific component shall be only replaced by the component specified in that Documentation for safety reasons.



Protective grounding terminal.



Alternating current /voltage.



Hazardous live terminal .

ON: Denotes the apparatus turns on.

OFF: Denotes the apparatus turns off, because of using the single pole switch, be sure to unplug the AC power to prevent any electric shock before you proceed your service.

WARNING: Describes precautions that should be observed to prevent the danger of injury or death to the user.



Disposing of this product should not be placed in municipal waste and should be separate collection.

CAUTION: Describes precautions that should be observed to prevent danger of the apparatus.

WARNING

• Power Supply

Ensure the source voltage matches the voltage of the power supply before turning ON the apparatus.

Unplug this apparatus during lightning storms or when unused for long periods of time.

• External Connection

The external wiring connected to the output hazardous live terminals requires installation by an instructed person, or the use of ready-made leads or cords.

• Do not remove any cover

There are maybe some areas with high voltages inside, to reduce the risk of electric shock, do not remove any cover if the power supply is connected.

The cover should be removed by the qualified personnel only.

No user serviceable parts inside.

• Fuse

To prevent a fire, make sure to use fuses with specified standard (current, voltage, type). Do not use a different fuse or short circuit the fuse holder.

Before replacing the fuse, turn OFF the apparatus and disconnected the power source.

• Protective Grounding

Before turning the product ON, make sure that it is connected to Ground. This is to prevent the risk of electric shock. Never cut internal or external Ground wires. Likewise, never remove Ground wiring from the Protective Ground Terminal.

Never cut off the internal or external protective grounding wire or disconnect the wiring of protective grounding terminal.

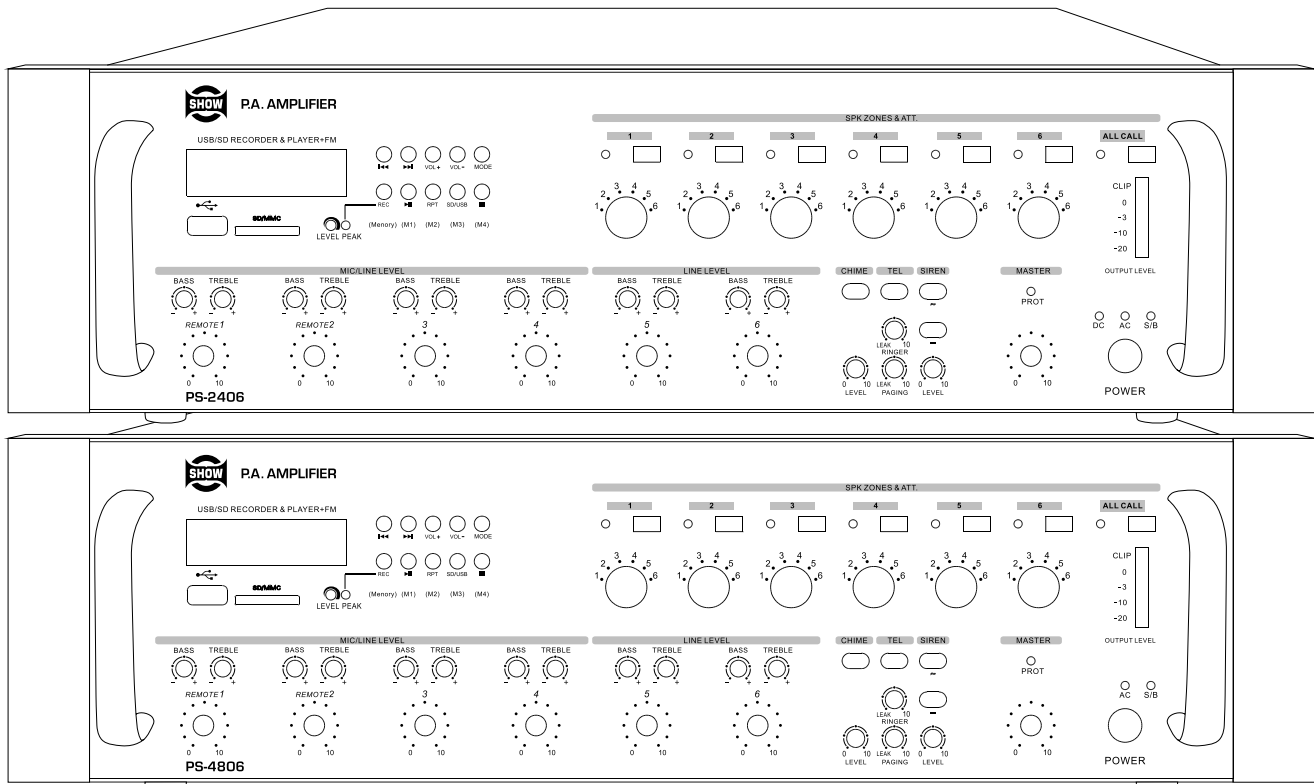
The apparatus shall be connected to a mains socket outlet with a protective earthing connection.



PS-2406/4806 6 ZONES PA AMPLIFIER-120W/240W

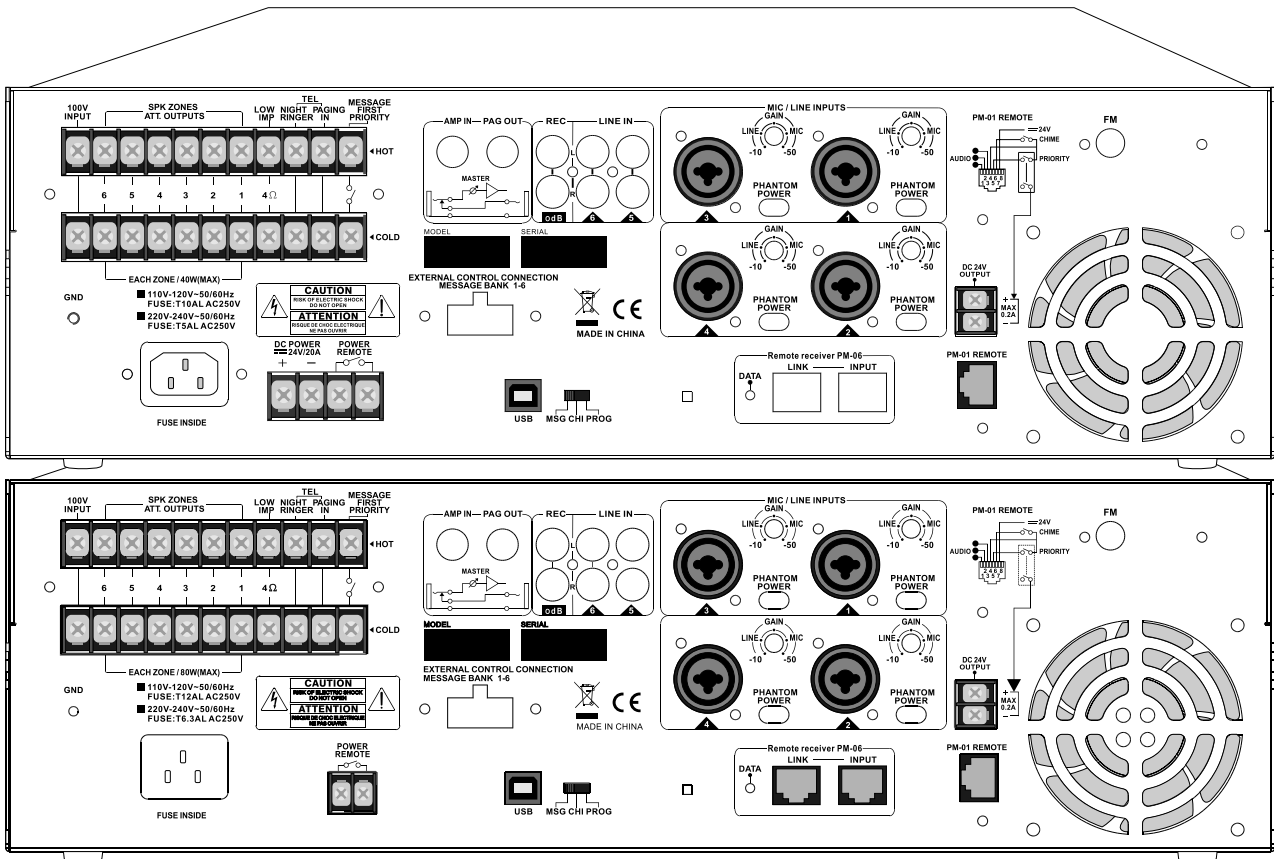
•INTRODUCTION:

THE PS SERIES AMPLIFIER IS 6 ZONES MULTI-FUNCTIONAL PUBLIC ADDRESS SYSTEM, WITH OUTPUT POWER OR 240W(6X40W) 480W(6X80W) . EACH ZONE HAS SEPARATE VOLUME CONTROL . THERE ARE 6 ZONE SELECTOR SWITCHES AND ONE ALL SELECTOR SWITCH. WHEN PRESS ALL, ALL ZONES ARE SELECTED AND THE OUTPUT IS AT MAXIMUM LEVEL. IT CAN PLAY MP3+FM AND CAN SET VARIOUS PRIORITY GRADES ON MP3 SCREEN.THIS SYSTEM HAS BUILT-IN CHIME AND SIREN WHICH ALSO CAN BE PROVIDED BY EXTERNAL MEMORY. IT CAN BE CONNECTED TO SEVERAL PM-01 MIC AND PM-06 MIC. CH1 TO CH4 ARE MIC INPUT, AND EACH INPUT HAS SEPARATE PHANTOM POWER SWITCH/GAIN CONTROL/VOLUME CONTROL/TONE CONTROL. CH5-CH6 ARE LINE INPUT, EACH INPUT HAS SEPARATE VOLUME CONTROL/TONE CONTROL.IT HAS EXTERNAL CONTROL CONNECTION FOR SIGNAL INPUT. IT HAS REC OUT/PRE OUT/AMP IN FUNCTION AND OVERHEAT AND OVERLOAD PROTECTION. IT HAS A 24VDC EMERGENCY POWER SUPPLY AND HAS POWER REMOTE CONTROL FUNCTION.



• FRONT PANEL

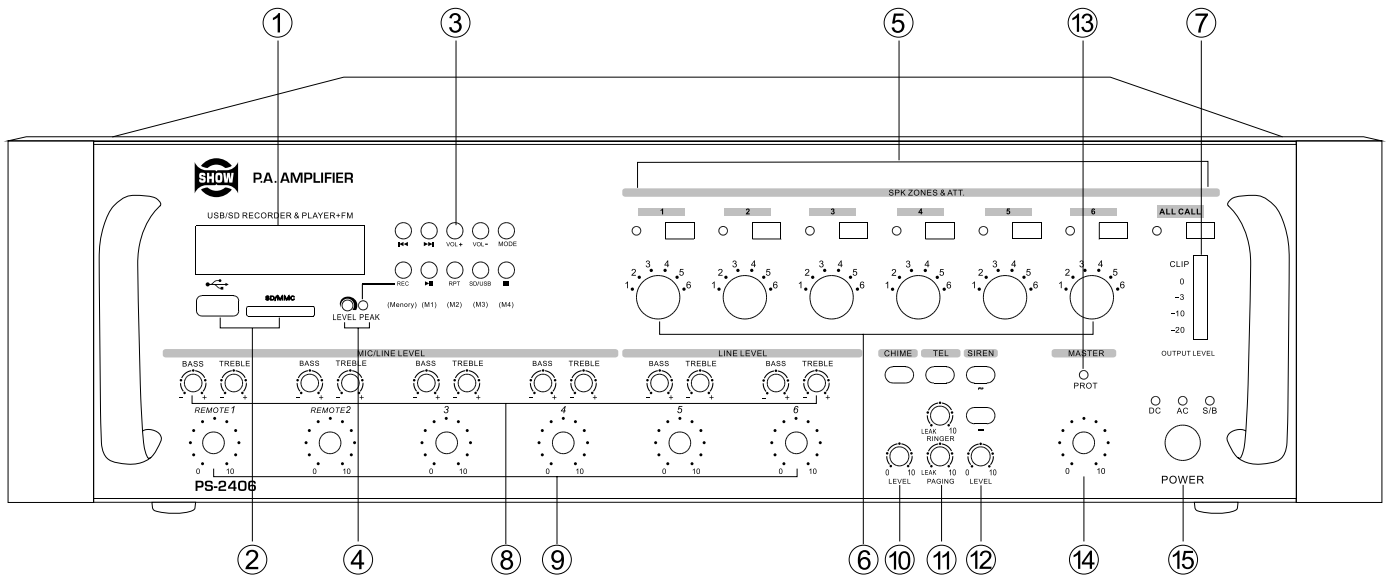
- 1、 4 Mic Input Volume /treble/bass Controls;
- 2、 2 Line Input Volume /treble/bass Controls;
- 3、 1 Chime Volume Control, 1 Chime Switch;
- 4、 1 Telephone Ringer, 1 Telephone Volume Control,1 Telephone Switch;
- 5、 1 Siren Volume Control, 2 Siren Selector Switches;
- 6、 1 Master Control;
- 7、 6 Zone Volume Controls, 6 Zone Selector Switches, 1 All Selector Switch;
- 8、 Mp3 + fm Player With Recording Priority Setting;



• REAR PANEL

- 1、 4 Mic inputs, 4 gain controls, 4 phantom power switches;
- 2、 2 Line inputs;
- 3、 1 rec output, 1 pre output, 1 amp input;
- 4、 1 PM-01 input and 1 24V DC output;
- 5、 1 PM-06 input;
- 6、 FM Antenna terminal;
- 7、 USB port and switch, external control connection for signal input;
- 8、 6 Zone outputs, 1 4ohm output;
- 9、 Ringer and telephone input;
- 10、 100V input;
- 11、 24V DC input, power remote control;
- 12、 AC input;
- 13、 DC input is 24V/20A PS-2406, and the output power is nearly The half of AC supply.

PS-2406/4806 FUNCTION DESCRIPTION



1. The display of MP3 and FM player indicates the playing status of MP3&FM and the priority setting.
2. USB+SD/MMC: the play medium of MP3 player, which supports SD card and USD playing and priority setting.
3. The operation control key of MP3 and FM player, including the operation of selecting the song, playing, pause, last song, next song, audio adjustment, switch recording, selecting the frequency of FM player and volume adjustment etc.
4. LEVEL potentiometer: is used to adjust the level during recording.
5. Zone broadcast selecting button.
The indicator LED will continually blink after pressing any button of 1~6 and the outputs appears at the zones. The output of each zone broadcast will be controlled by the volume switch. All the zone broadcast will be output with the maximum volume after pressing ALL CALL and the volume will not be affected by the zone volume switch, but will be affected by the MASTER.
6. Zone broadcast volume control knob.
The volume control switch with 6 levels, level 1 is the minimum and level 6 is the maximum. This button doesn't work after pressing ALL CALL.
7. Output trim indicator LED.
When any signal is quit, indicator LED will flash. When the red LED blinks, it means the output is too large and the sound with distortion, which requires to reduce the volume.
8. Input signal bass and treble control.
Can increase or reduce the low frequency (100Hz) and high frequency (10KHz) of the input signal by 10dB.
9. Input signal volume knob.
When the signal inputs to the related input terminal, the control knob is used for adjusting the signal volume. REMOTE 1: control the input volume of MIC 1 & PM-01 REMOTE 2: control the input volume of MIC 2 & PM-06 Knob 3~6: control the input volume of 3~6.

10. CHIME switch & CHIME volume knob.

The CHIME will appear after pressing the switch and the CHIME can be adjusted by the control knob.

11. Ring switch & ring volume knob & telephone broadcast volume knob.

When the ring signal inputs, the ring will be output after pressing the ring control switch, and the alarm volume can be adjusted by the volume knob. When the telephone broadcast signal inputs, the alarm volume can be adjusted by the telephone broadcast knob.

12. Alarm switch & alarm volume knob.

There are two kinds of alarm rings, the alarm rings will output after pressing the alarm switch and the alarm volume can be adjusted by the volume knob.

13. Output protection indicator LED.

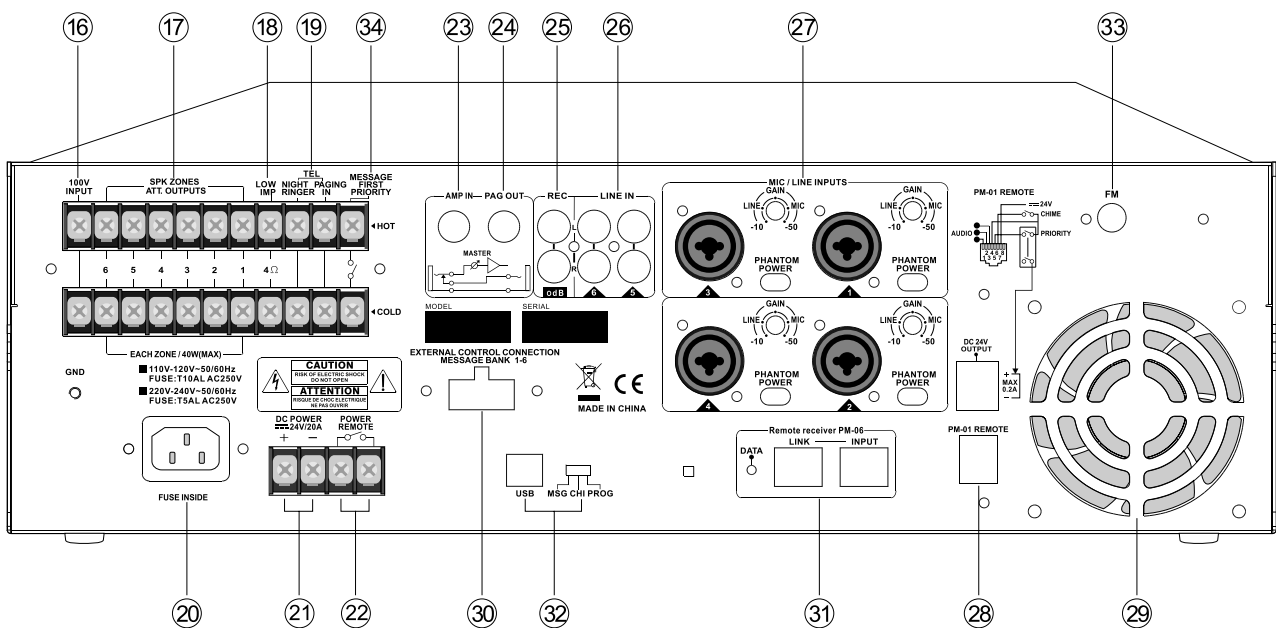
When the output overload or short-circuit, the internal circuit stays at the protection status and without any output, the protection indicator LED blinks.

14. Master volume control knob.

All the input signals are controlled by the master volume knob except 100V input.

15. Power switch & status indicator LED.

Press the power switch when using AC power, the AC indicator LED blinks. The DC power can be used when there is no AC power. Press the power switch and DC indicator LED blinks. When the AC power recovers, DC power will be shut down automatically. S/B LED blinks when the product is turned off.



16. External 100V input terminal.

Single product mode: SIREN / CHIME / PAGING shares the amplifier when no external 100V input, when SIREN / CHIME / PAGING occurred at some zones, the other zones will at mute mode. Dual product mode: BGM / SIREN/CHIME/PAGING use different amplifiers when external 100V input and when SIREN / CHIME / PAGING occurred at some zones, the other zone can play the background music.



17. Zone broadcast output terminal.

Can connect to multiply zone to broadcast when needed. Six zones max. are allowed to be connected, the volume of each zone can be adjusted as per Item 6. The power of all the zones can't exceed the rated output power of the product.

18. 4 Ohm output terminal.

It's designed for connecting 4 Ohm speaker and the output power is same as the rated power of the product. The 4 Ohm output terminal can't be used with the zone broadcast output terminal at the same time.

19. Ring input & telephone broadcast input terminal.

It's used for ring input and audio input and the ring and telephone input volume can be adjusted as per Item 11.

20. AC power input terminal.

The AC power & voltage must consist with the power & voltage marked on the rear panel, otherwise it will damage the product.

21. DC power input terminal.

It's designed for DC24V power input terminal and when AC power is turned off, the product will automatically switch into DC power. When the AC power recovers, DC power will automatically shut down. The DC power is the spare power for any emergency.

22. External power switch terminal.

The function is same with Item 15 and can connect to other location for easily control the switch of the product. The function of item 15 must be at OFF position when this function is working.

23. External signal input terminal of the amplifier.

Only the external input signal works when 6.3 Φ plug inserted and all the other input signal will be cut down.

24. PAG OUT port instructions:

When the PAG OUT port is not connected, PAGING system works at single-machine mode. When PAG OUT is connected to the external amplifier, PAGING system will switch into the external amplifier and work at this mode.

The difference between these two modes:

Single-machine mode:

When PM-06 is paging, PAGING signal can only be found at PAGING areas and no output is available at other areas.

Amplifier connecting mode:

When PM-06 is PAGING, PAGING signal will be output by the PAGING area. The non-PAGING signals can be continuously output by other areas.

25. Recording signal input terminal.

Connect to this terminal for external recording.

26. AUX line input terminal.

External audio signal input, such as connecting to the radio, DC player etc.

27. Microphone or line input terminal, gain control knob, phantom power switch.

The gain control range of gain control knob is 40dB when externally connecting the MIC or line. If needs the phantom power when externally connecting the MIC, it's required to press the phantom power switch and then can output 24V phantom power, otherwise don't press the phantom power switch.

28. PM-01 input terminal & DC 24V output terminal.

When connecting PM-01, 3 set maximum can be connected and need to press the phantom power switch of MIC I. If there is urgent broadcast, it's required to push the priority of PM-01 rear panel (please refer to the PM-01 function description), DC24V input shows at the DC24V input terminal at the moment. This voltage is used to control the final terminal with the volume control output with the max volume.

29. The venting port of the heat-sink fan.

The thermal is cooled through this venting port when the product is working. The venting port can't be blocked, otherwise will affect the product working.

30. External key is designed to control the playing of DIGITAL MESSAGE inside the host.

31. Remote receiver PM-06.

INPUT: connect the OUTPUT port of PM-06.

LINK: connect another PS-2406/4806 for extended using.

32. USB + 3-section dialing: Used to update the digital message, CHIME, firmware of the host.

CHI: CHIME sound of the host

MSG: the digital message of the host

PROG: the firmware and audio priority setting.

33. FM antenna terminal.

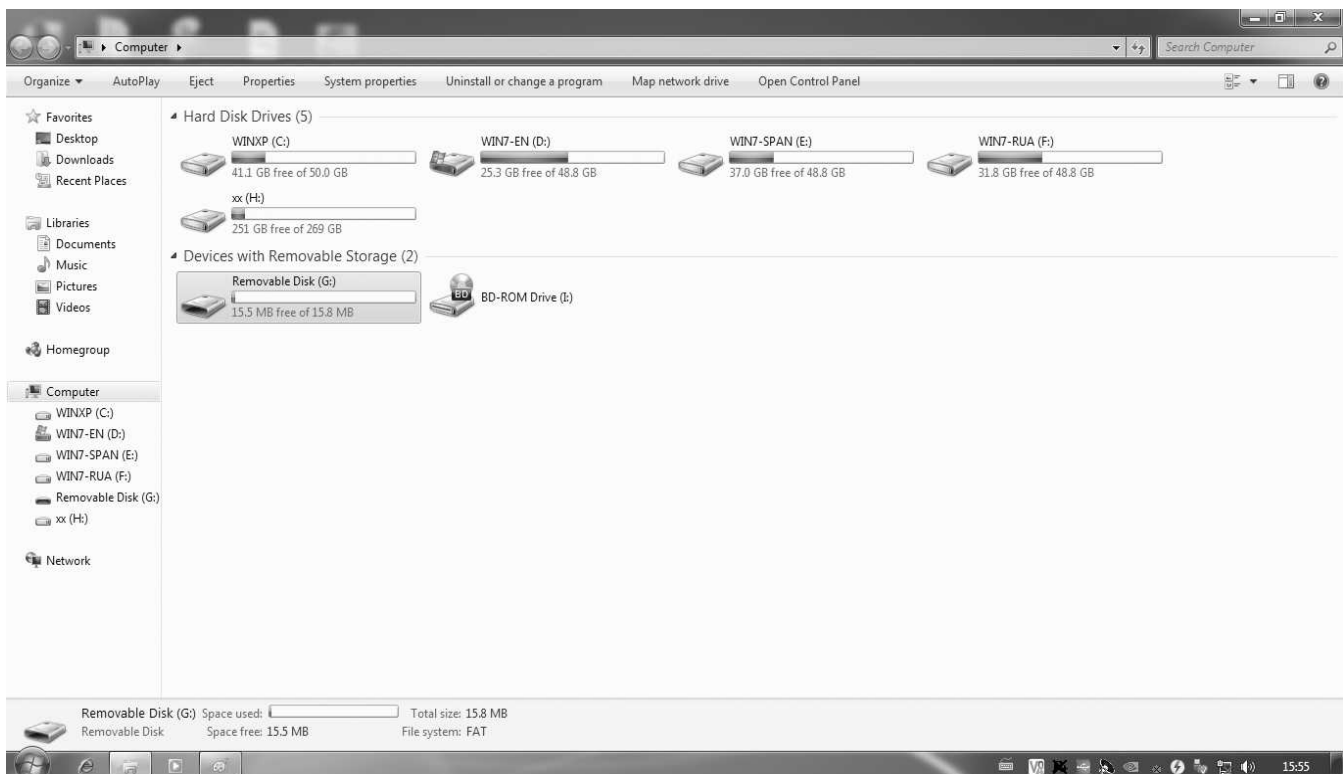
34. External connection priority switch.

The setting is highest when connecting to MSG priority. The priority will be the normal setting after disconnecting.

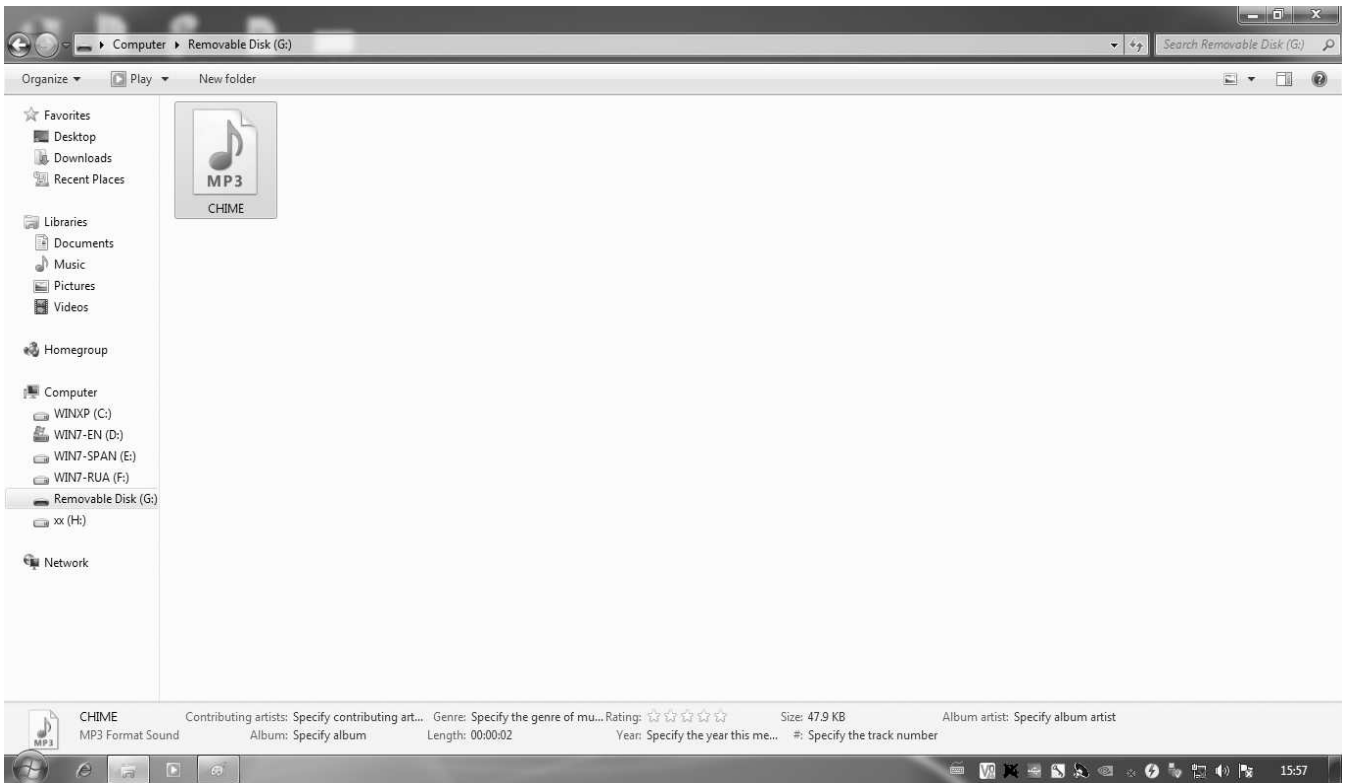
• CHIME changing

1. Push the switch near 32-USB to the CHI.

2. Connect to the computer by USB cable and will see the interface below.

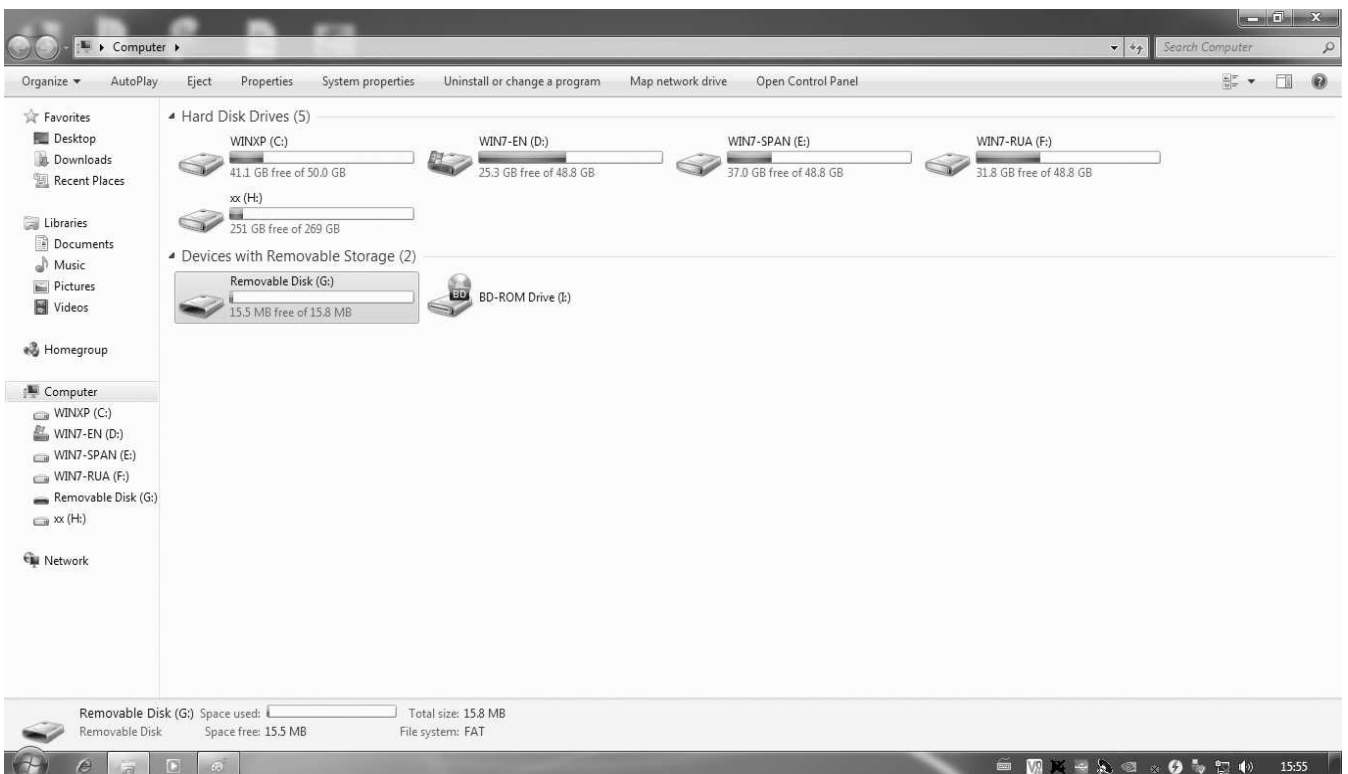


3. Click and enter the disk to replace the folder, which can change the CHIME.



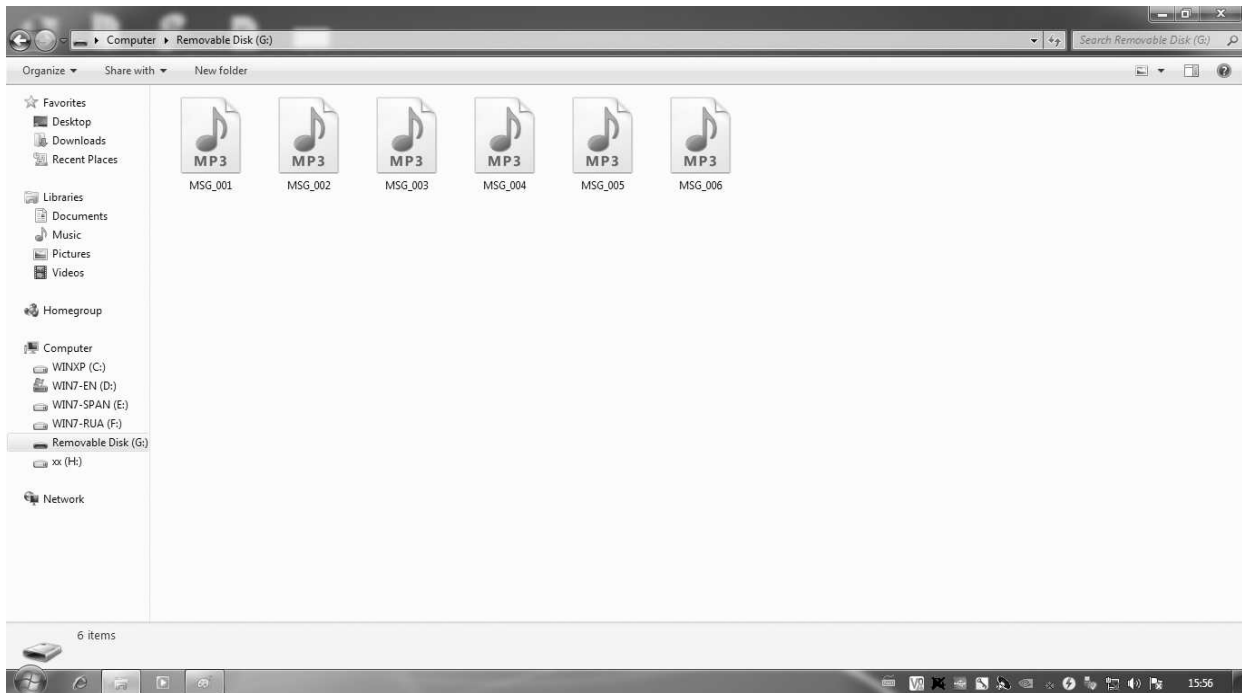
• MSG changing

1. Push the switch near 32-USB to the MSG.
2. Connect to the computer by USB cable and will see the interface below.



3. Click and enter the disk to replace the folder, which can change the MSG.

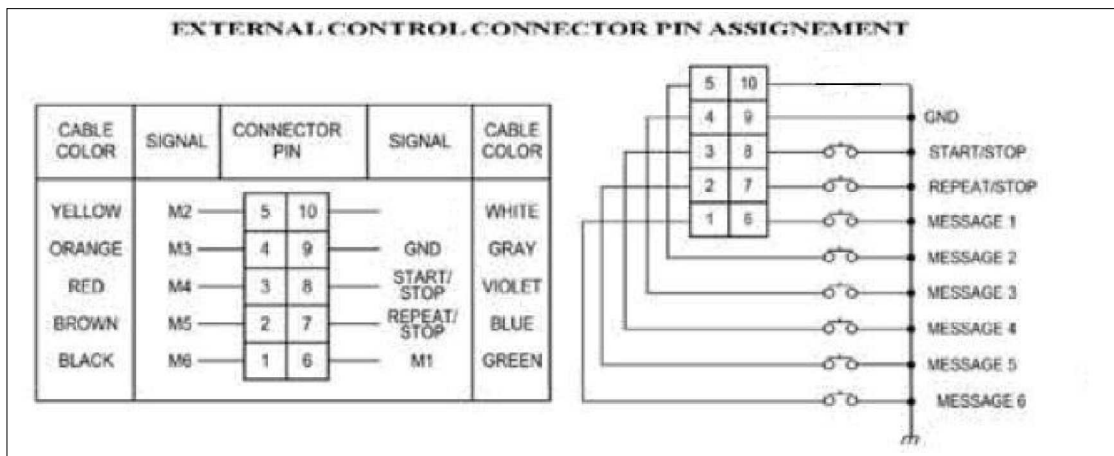
Remark: The MSG is played according to the storage sequence instead of the sequence of the file name.



• **Zone indicator status of the host front panel**

1. OFF: there is no sound can be output at this zone currently.
2. Continually blinks: local output is available at this zone .
3. Occasionally blinks: PM-06 is asking for speaking at this zone.

• **The 10P terminal of the host rear panel**

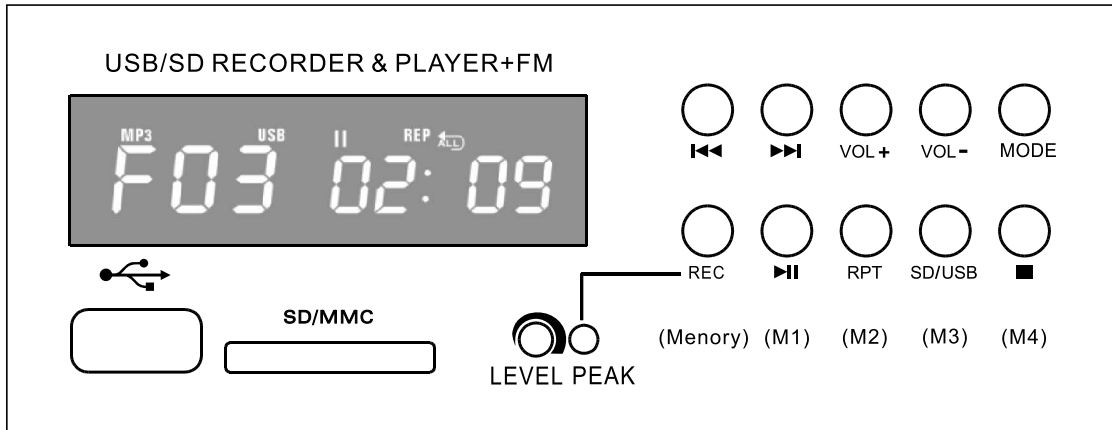


The slight-touch button is needed for **START/STOP&REPEAT/STOP** buttons. **MESSAGE 1_6** button is required to use button with locking function but doesn't bounce.

• **Operation instructions:**

1. Select "MESSAGE" first, otherwise MESSAGE 1 will be selected if all is not selected.
2. Then press "START/STOP" or "REPEAT/STOP" button to play or pause.

Note: This port will not work when PM-06 is at PAGING status.



• Mp3 playing mode operation

1. <<

Last song

2. >>

Next song

3. VOL+

Volume+

4. VOL-

Volume-

5. MODE

Short-pressing: change into FM playing.

Long-pressing for 2S: enter into the sound priority setting.

6. REC(Memory)

Enter into the recording mode (please select the recording device before recording).

7. PLAY / PAUSE (M1)

Play / pause

8. RPT(M2)

Change into the repeat mode

repeated playing

sequence play

random play

sequence play the song in the folder

random play the song in the folder

9. SD/USB(M3)

Play device selecting, SD or USB.

10. STOP(M4)

Stop playing

• Function of FM mode

1. <<
Short-pressing: reduce the frequency point by 0.1MHZ
Long-pressing for 2S: automatic scan the low frequency point and will stop automatically when scanning the available frequency channel.
2. >>
Short-pressing: increase the frequency point by 0.1MHZ
Long-pressing for 2S: automatic scan the high frequency and will stop automatically when scanning the available frequency channel.
3. VOL+
Volume+
4. VOL-
Volume-
5. MODE
Short-pressing: change into MP3 play
Long-pressing for 2S: enter into the sound priority setting.
6. REC (Memory)
Enter / exit the frequency saving list.
7. PLAY/PAUSE (M1)
Short-pressing: Turn on the frequency channel of M1 frequency point
Long-pressing for 2S: save the current frequency point to M1, and will automatically jump into the frequency saving list after successfully saved.
8. RPT (M2)
Short-pressing: Turn on the frequency channel of M2 frequency point
Long-pressing for 2S: save the current frequency point to M2, and will automatically jump into the frequency saving list after successfully saved.
9. SD/USB (M3)
Short-pressing: Turn on the frequency channel of M3 frequency point
Long-pressing for 2S: save the current frequency point to M3, and will automatically jump into the frequency saving list after successfully saved.
10. STOP (M4)
Short-pressing: Turn on the frequency channel of M4 frequency point
Long-pressing for 2S: save the current frequency point to M4, and will automatically jump into the frequency saving list after successfully saved.

• The function of priority setting mode

1. <<
<< is used to select the sound resource
2. >>
>> is designed for selecting the sound resource
3. VOL+
Turn on the priority (1 means first priority, 4 means the last priority)
4. VOL-
Reduce the priority (1 means first priority, 4 means the last priority)
5. MODE
Exit the priority setting mode



- 6.REC (Memory)
Doesn't work
- 7.PLAY/PAUSE(M1)
Doesn't work
- 8.RPT(M2)
Doesn't work
- 9.SD/USB(M3)
Doesn't work
- 10.STOP(M4)
Doesn't work

• **Function of recording mode**

- 1.<<
Doesn't work
- 2.>>
Doesn't work
- 3.VOL+
Doesn't work
- 4.VOL-
Doesn't work
- 5.MODE
Short-pressing: Back to MP3 mode.
Long-pressing for 2S: Enter into the sound priority setting mode.
- 6.REC(Memory)
Start to record
- 7.PLAY/PAUSE(M1)
Doesn't work
- 8.RPT(M2)
Doesn't work
- 9.SD/USB(M3)
Doesn't work
- 10. STOP(M4)
Stop recording and save.
- 11. LEVEL
Adjust the recording gain at the recording mode.
- 12. PEAK (LED)
Red LED blinks when the recording gain is too high.
- 13. Recording and playing instructions:
You will enter into the recording mode after pressing "REC" button at MP3 playing mode.
After entering into "REC" mode and press "REC" button, it will start to record.
After recording, press "STOP" or "MODE" button to stop and save the recording.
After stopping recording, it will automatically change into MP3 playing mode. You can play the recording file.
The recording files are to be named as "recXX.mp3", "XX" means the number, which will automatically increased per the recording files.

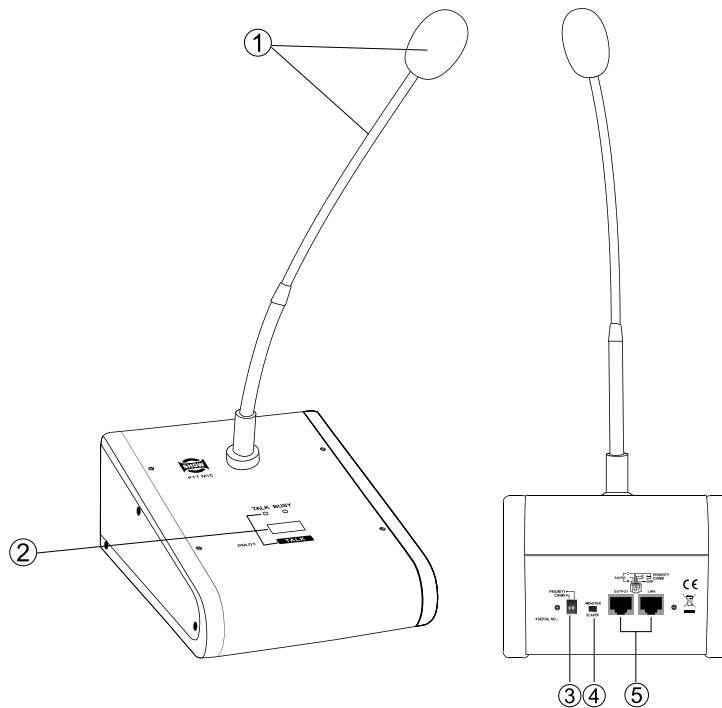
SPECIFICATIONS

	PS-2406 / PS-4806	Test Conditions	Standard reference	Remark
1	AC power	110-120V~,220-240V~ 50Hz/60Hz	230V~ 50Hz	±10%
2	DC power	24V DC	PS-2406: 20A PS-4806 NC	
3	Input sensitivity	MIC1-4 (balanced)	-52dBV	±1.5dBV
		LINE1-4 (balanced)	- 10dBV	±1.5dBV
		LINE 5-6(unbalanced)	- 6dBV	±1.5dBV
		Telephone emergency (balanced)	-12dBV	±1.5dBV
4	S/N ratio	MIC (20-20000Hz)	60dB	±1.5dBV
		LINE (20-20000Hz)	70dB	±1.5dBV
5	Bandwidth		80-16000Hz	-3dBV
6	THD+N		<1%	
7	Tone control	BASS @ 100 Hz	± 10dB	±1.5dBV
		TREBLE @ 10kHz	± 10dB	±1.5dBV
8	Phantom supply	MIC (balanced)	24V	± 2.5V
9	REC		1V	±0.2V
10	PRE OUT		1V	±0.2V
11	AMP IN		1V	±0.2V
12	Power output	4Ω	PS-2406: 240W PS-4806: 480W	±5%
13	zone power output	70 V or 100V	PS-2406: 6*40W PS-4806: 6*80W	±5%
14	Power consumption	PS-2406: 680W PS-4806: 1000W		
15	MP3 Decoder (USB/SD)	USB/SD Device	Builds in the USB Full speed (12Mbps) Host control function Supports the USB mass storage class Supports SDHC memory cards Supports MMC,mini-SD and micro-SD cards Supports FAT32,FAT16 and FAT 12 file system Support MP3/wma/wav/aac format Support the file size up to (2G-1) byte. Priority SD>USB It' s recommended to use less than 32GB for Mp3 medium capacity.	
16	MP3 Encoder	USB/SD Device	Supports MP3 format encode (MPEG1 Layer3). Supports sample rate of 48 kHz. Encoding bit rate 192 kbps . Supports the writing of the encoded file to USB or SD card.	
17	FM		Frequency range :87.5 - 108.0 MHz STEP :100KHz MONO= 1, and L = R;Δf = 75 kHz.VEMF = 1 mV. FMOD = 1 kHz, 75 μ de-emphasis	
18	CHIME ,MESSAGE		Support mp3 files (sample rate 8K~44.1K, Bit rate 8~224Kbps ,16bit)	
19	Dimension(WxDxH)	444x367x130mm		
20	Weight	13.3KG PS-2406:15.1KG PS-4806:15.9KG		

PM-01 FUNCTION DESCRIPTION

PM-01 is a Desktop Microphone, which specially designed to be worked with PS-2406/4806 paging system.

- It has general microphone's function;
- It can set Master or Slave mode.
- It can set CHIME and priority by DIP switch;
- One host can connect with 3 set PM-01 max;
- With status indicators on panel;
- Power is supplied by PS-2406/PS4806, no need for external power supply;



• FUNCTION INTRODUCTION

1. Goose neck and microphone head.

The goose neck is used to adjust the height of microphone head, the distance between the microphone and mouth should be 30cm when speaking, otherwise, will affect the sound transmission.

2. "TALK" Button.

When single PM-01 is used, there are two modes for the CHIME sound.

(1) At the CHIME sound mode, always pressing "TALK" button until the CHIME disappear, and then start to talk.

(2) Press the "TALK" button to speak when there is no CHIM.

When two or more than two PM-01 is connected, there are two modes when pressing the master-slave switch:

(1) When the master-slave switch is at the MASTER position, feel free to speak.

(2) When the master-slave switch is at SLAVE position, it means the line is busy if the BUSE indicator blinks and people can't speak. When the BUSE LED is off, it means you can speak.

3. CHIME switch, PRIORITY switch.

CHIME ON means there is CHIME sound when pressing "CHIME" button

CHIME OFF means there is no CHIME sound when pressing "CHIME" button

PRIORITY ON: PM-01 is the first priority

PRIORITY OFF: the priority of PM-01 will be set by the host.

4. Master & Slave mode selecting switch.

When two or more than two PM-01 is connected, you have the priority to speak when the switch is at "Master" position. You can't speak until the BUSE LED is off when switch is at "Slave" position.

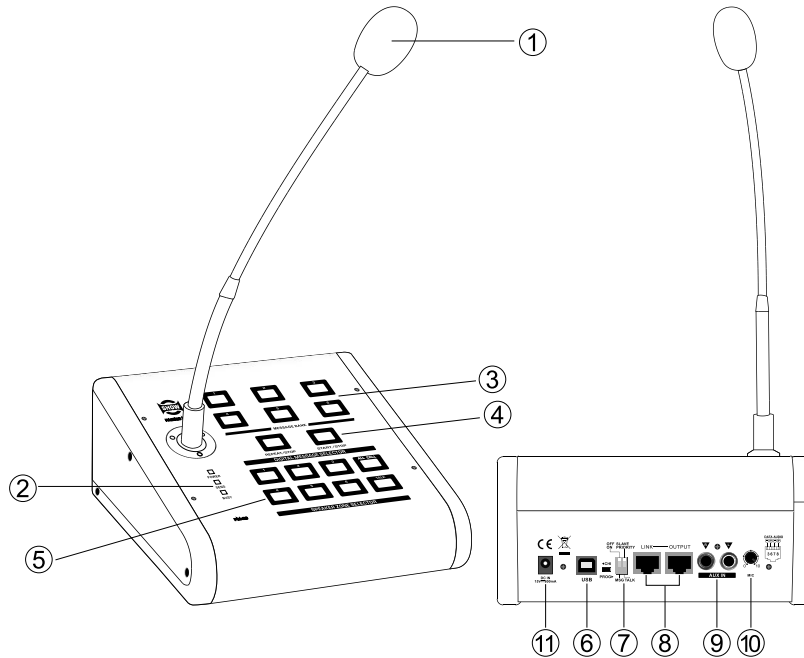
5. LINK/OUTPUT: INLETS.

LINK inlet is used to connect the output inlet of another PM-01 for cascade connection.

OUTPUT inlet is used to connect the LINK inlet of another PM-01 or connect to the PM-01

INPUT inlet of PS-2406. The connection length between PM-01 and PS-2406 or two set of PM-01 can't exceed 1.5m.

PM-06 FUNCTION DESCRIPTION



1. GOOSE NECK Microphone base: The goose neck microphone of different length can be used as per the actual situation.
2. Indicator:
 - POWER: power indicator
 - SEND: communication indicator, which will light up when communication data is available.
 - BUSY: busy indicator, "TALK" "MESSAGE" don't work when it blinks.
3. MESSAGE BANK: the button for selecting the digital message, which can be played by selecting the audio message built-in PS-2406. The button LED will light up when the message is selected.
4. DIGITAL MESSAGE: the button for controlling the digital message, which can make the digital message play, repeat, stop. The function only works when the BUSY LED turns off.
5. SPEAKER ZONES SELECTOR: 1~6 buttons are designed for selecting the zones which are needed to broadcast. The button LED blinks when the zone is selected. ALL CALL button is used to select all the zones and adjust zones volume to the max to broadcast.
6. USB + SWITCH:
 - USH: Connect computer to update CHIME voice or the programming of the product.
7. 1/2P DIP switch:
 - MSG---ON/OFF: makes DIGITAL MESSAGE function work: ON means available, OFF means unavailable.
 - TALK---SLAVE / PRIORITY: It can separate the master and slave when numbers of PM-06 are connected together, and the master is the first priority over than the slave.
8. LINK----OUTPUT:
 - LINK: Used to connect the output inlet of another PM-06.
 - OUTPUT: Used to connect the LINK inlet of another PM-06 or connect the INPUT inlet of PS-2406. Only three PM-06 (max.) can be connected when connecting with many products. The cable between each product is less than 100m and it's recommended to use CAT-6 type cable.
 - Note: it is required to be connected with the external power module.
 - When using one product, the cable is less than 100m and it is recommended to use CAT-6 type cable. Please note that the external power module is not needed.

9. AUX IN: external audio input. Transmit the MIC signal and the mixed voice to to the host after audio input during the speaking.
10. MIC: adjust the MIC sensitivity.
11. DC15V 800mA , power supply .

• **PAGING function operation:**

1. Choose the zone selector button 1~6 or "ALL CALL" to select the zone to broadcast.
Single amplifier mode: All the zones will be forced to the max input by "ALL CALL".
External-connecting amplifier mode: ALL CALL doesn't work.
2. Asking to talk by pressing the "TALK" button and the talking ends after pressing "TALK" button again.
During the PAGING status, AUX IN signal and MIC signal will be transmitted to the selected zones.
During the PAGING status, the MIC and AUX IN are not input the signal for 15S, PM-06 will quit the PAGING status automatically.

• **MSGING function operation:**

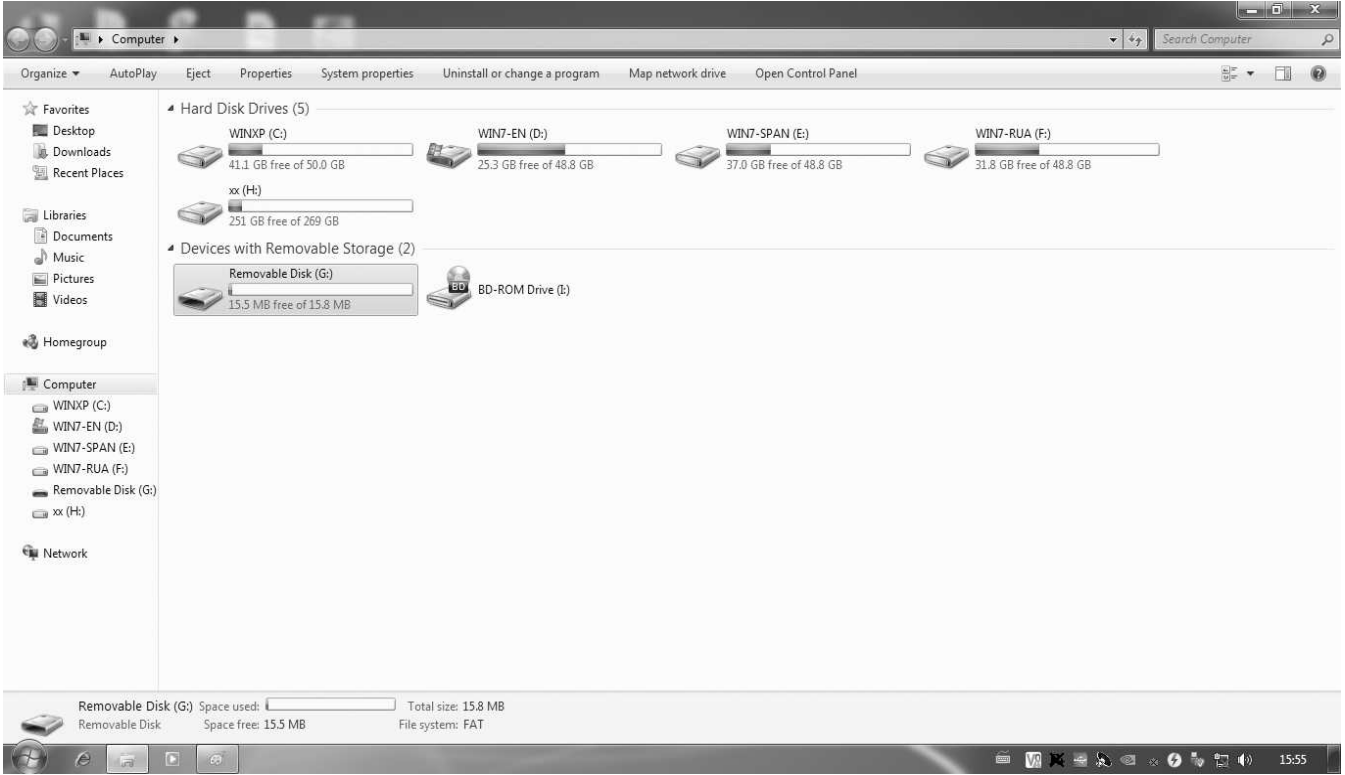
1. Select the digital message needs to be broadcast by pressing the 1~6 buttons of "MESSAGE BANK".
2. And then select the zone to broadcast digital message by zone selector button 1~6 or "ALL CALL".
Single amplifier mode: All the zones will be forced to the max input by "ALL CALL".
External-connecting amplifier mode: ALL CALL doesn't work.
3. "REPEAT/STOP" , "START/STOP" is used to repeat, play, stop, single play.

• **Indicator instruction:**

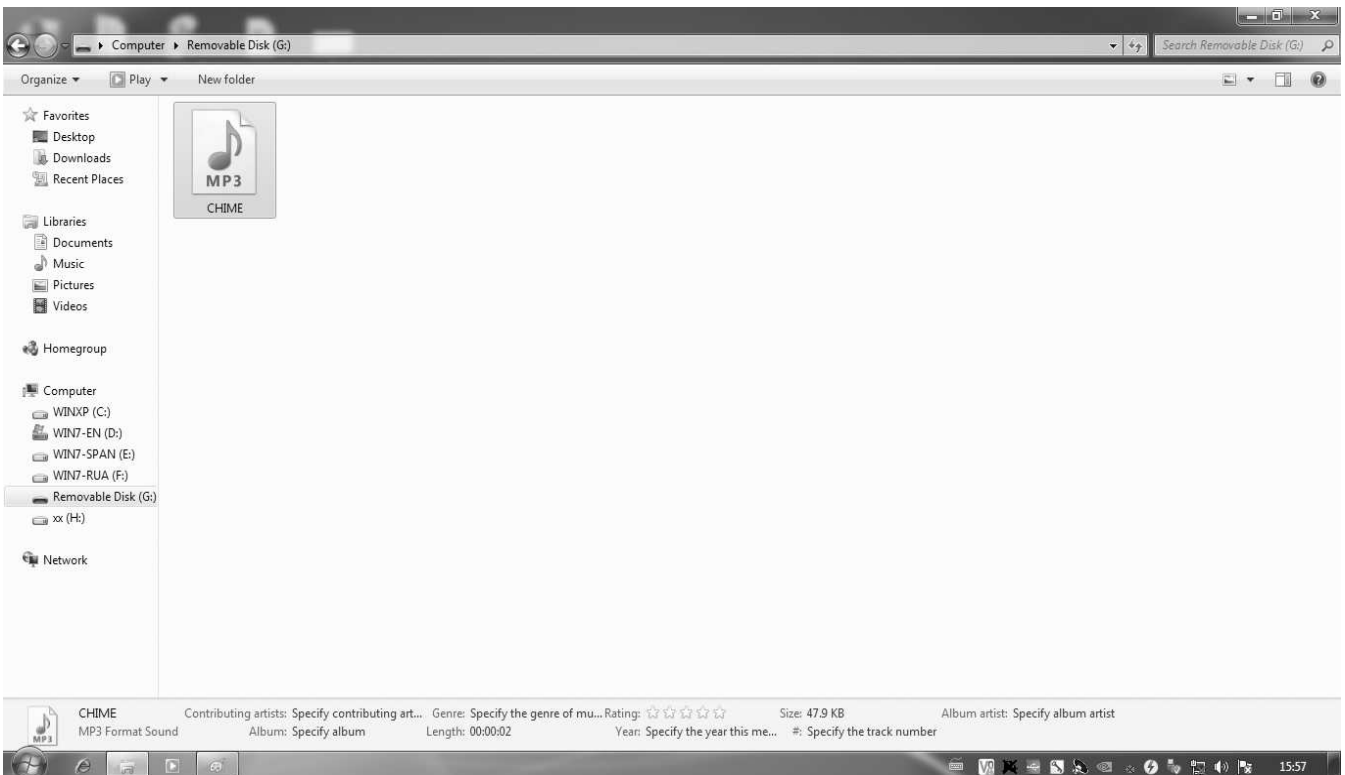
1. On: the system is connected to the power.
OFF: the system is not connected to the power.
2. SEND: signal indicator.
Blink: PM-06 is PAGING or MSGING.
OFF: No paging or MSGING.
3. BUSY: busy indicator.
Blink: the system is busy.
Some other PM-06 is occupying the system at the moment and can't ask for talking, "TALK", "REPEAT/STOP", "START/STOP" buttons don't work.
OFF: the system is free.

• **CHIME changing:**

1. Push the switch near 6-USB to the CHI.
2. Connect to the computer by USB cable and will see the interface below.



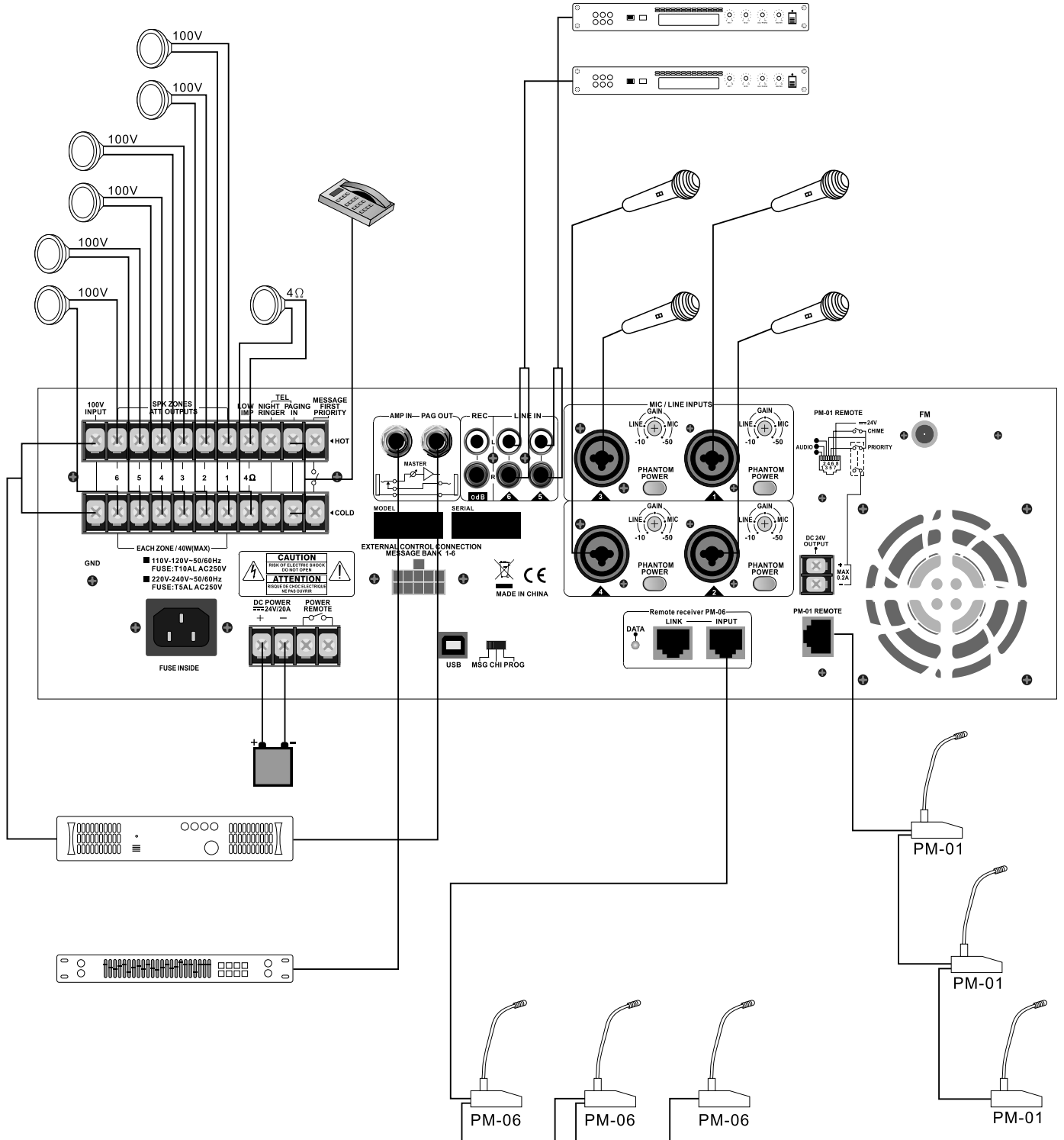
3. Click and enter the disk to replace the folder, which can change the CHIME.



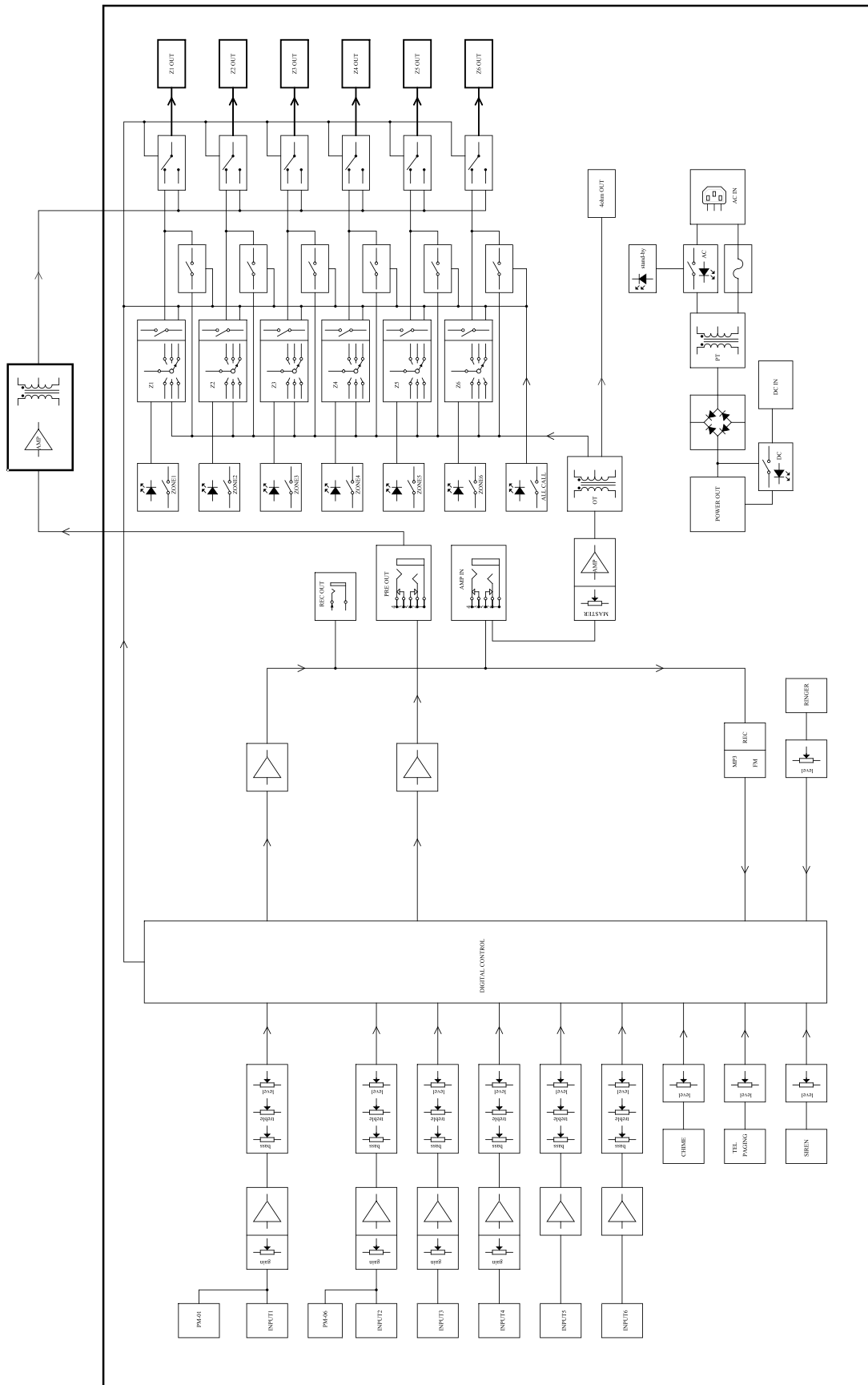
• Cascade connection of multiply PM-06:

1. The 8-LINK inlet on the rear panel of PM-06 and the 8-OUTPUT of the former cascade of PM-06 will be connected by the system to realize the cascade connection of the multiply products.
2. The priority can be set by 7-PRORITY/ SLAVE when at the cascade connection mode. PM-06 set as PRORITY can skip PM-06 set as SLAVE to PAGING or MSGING.

CONFIGURATION EXAMPLE



PS-2406/4806 BLOCK DIAGRAM





*SHOW® is a registered trademark of
SEIKAKU TECHNICAL GROUP LIMITED*

SEIKAKU TECHNICAL GROUP LIMITED

NO.1 LANE 17, SEC.2, HAN SHI WEST ROAD, TAICHUNG 40151, TAIWAN

tel: 886-4-22313737 - fax: 886-4-22346757